

CORPORACIÓN ALDEA GLOBAL

Participatory Planning for Sustainable Development



15 YEARS HELPING COLOMBIA TO BE THE COUNTRY WE ALL WANT



Colombia 2000 - 2015

Introduction

Our overarching commitment, in the context of social, ethical and environmental responsibility, has been to contribute to better quality of life of rural families and households, and to the sustainable development of the country Colombia. In the course of 15 years, since the foundation of Aldea Global in May, 2000, we have achieved the design and implementation of strategies of social participation and have contributed to enhance communication of stakeholders and joint management between society and the public and private sectors. Successful partnerships with strategic partners and the effective participation of rural communities have positioned Aldea Global's image at regional, national and international level.

Our work has been focused on improving local capacities and skills by means of a wide array of topics, such as: planning and management of watersheds, climate change adaptation and mitigation, governance of natural resources, forest and agroforestry management, best practices in agriculture. All our work is solidly based on local training and capacity building with a gender and intergenerational focus throughout.

The impacts of our work cover the dimensions of sustainable development: environmental, social, and economic. Our activities have allowed a wide range of stakeholders, farmers, indigenous peoples and Afro-Colombian communities in many parts of Colombia to understand their situation, to identify bottlenecks and put in place solutions to their development needs. Follow-up and monitoring are an integral part of our work which allows us to learn from experiences and achieve sustainable impacts.

We are convinced that our work has made important contributions to the country we strive for: Colombia in peace, better living conditions for rural families that give so much, with active participation and autonomous decisions, and with more gender equality. A country in which young people have opportunities for a better education. A Colombia which makes culture and environment key elements of its development.

For us to keep doing our work, we will continuously need the support of organizations, institutions and individuals willing to stand by us. This report is dedicated to all those who have believed in our values and goals, including the team of professionals from a wide range of academic background and broad professional experience, both in private and public sectors covering the social, economic and environmental dimension.

With special regards,

Partners of Aldea Global:

- | | |
|--------------------------------------|----------------------------------|
| - Doralice Ortiz Ortiz | - Martha Soraya Vargas Hernández |
| - Jeanette Kloosterman van der Sluis | - Vivi Leslie Chaurra Herrera. |

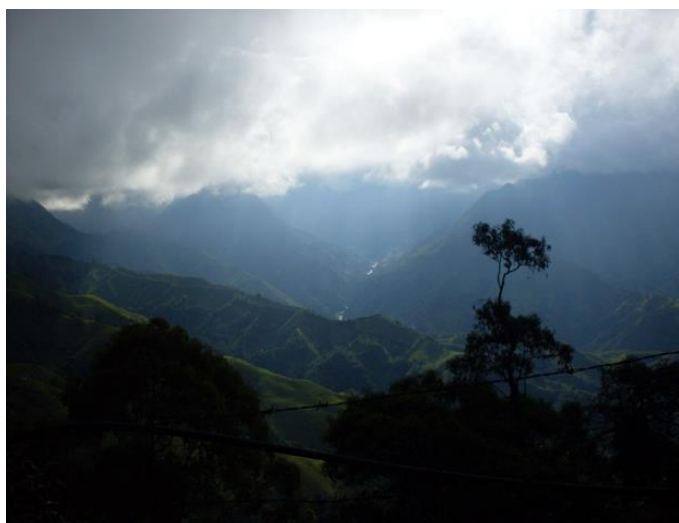
Team of advisers:

Mr. Gonzalo Duque Escobar, Ms. Paula Milena Franco, Mr. Carlos Mario Aguirre, Ms. Luz Mery Ortiz, Mr. Peter Saile, Mr. Augusto Alzate, Mr. Joanny Marín, Mr. Alexander Aguirre, Ms. Claudia Patricia Rodríguez, Mr. Fernando Benjumea, Ms. Paula Franco, Mr. Carlos Gilberto Alzate, Ms. Rosa Liliana Riveros, Mr. Alexander Roza, Ms. Adriana Largo.

2. Projects and processes carried out

Many people and institutions in Colombia and abroad together with the huge commitment of communities and farmers have made our success story possible. Let's just mention a few results:

- **Planning and Management of Watersheds (POMCA)**



Río Guarinó Watershed

Built the strategy for participatory process in all phases of POMCA: socio-environmental assessment; Prospective, establishment of Advisory Council, strengthening of stakeholder participation in all phases; monitoring and evaluation.

Watersheds attended: Guarinó, La Miel, Campoalegre; departaments of Caldas, Tolima and Risaralda.

Developed strategy to conciliate environment and local culture; support for managing Plans for Immediate Action (PAI) in the following watersheds: Guarinó, San Francisco, departaments of Caldas, Tolima and Risaralda, municipalities of Villamaría, Chinchiná,

Corporación Aldea Global
Participatory Planning for Sustainable Development

Manizales, La Dorada, and Marmato. Details: <http://www.coraldeaglobal.org/biblioteca-digital/>

Put into practice strategies of participatory planning with more than 450 people, 16 municipal administrations and 125 institutions and community organizations.

Provided advice to the management of more than 9 billion pesos Colombianos (approx. 4.5 million USD) targeting social-environmental and productive projects, the budget provided by private sector, institutions, and municipal administrations.



Charca de Guarinocito- La Dorada

The experience of a stakeholder from Rio Guarinó watershed:

“Back in 2008, I attended a few meetings of the PAI. Today, I am positively surprised by the progress achieved since then. Commitments made at that time have turned into reality. This is a great example of how cooperation and coordination achieve common goals and a sustainable environment for our municipalities...” Gerson Bermont, mayor La Dorada, Caldas, 2010.

Partners: Conchidor; La Dorada, Fundecos; Samaná, Cooperativa Ovina; Marulanda, Grupo juvenil Alfa y Omega; Manzanares, PDPMC; La Dorada, Tolipaz; Fresno, Aquamaná; Villamaría, Empocaldas; Manizales, Sociedad de Mejoras Públicas; Marsella, Fundación Bague; Chinchiná; Corpoenea; Manizales; among many others.

Strategic partners:



– Climate Change - adaptation and mitigation

Design of a scheme for payment for environmental services including an independent

Strategic Partners:

Manizales, Colombia. Tel + 57 6 8869002 mobile: + 57 3164828859. Email: dir@coraldeaglobal.org. www.coraldeaglobal.org

Corporación Aldea Global
Participatory Planning for Sustainable Development

Fund; Río Guarinó watershed, departments of Caldas and Tolima. See:

http://www.coraldeaglobal.org/wp-content/uploads/2013/10/Publicaci%C3%B3nEstrategia-CSA_Cuenca-Guarin%C3%B3_IICA_Aldea-Global-2011.pdf

- Implementation of “Environmental Bonds” - project, Río San Francisco watershed, departments of Caldas and Risaralda; a compensation mechanism to generate resources for increasing environmental awareness in small businesses; this activity was part of a Presidential programme and Corporación Escuela Galán. Formulation of CDM forest project: “Coffee - Carbon”: an alternative of agroforestry systems for coffee producers, department of Quindío.
- Achieved commitment and involvement of 23 indigenous and farmer communities in the departments of Quindío, Tolima and Risaralda.



MINISTERIO DE ASUNTOS
EXTERIORES DE FINLANDIA



- Strategic Partners:

El Departamento para la Prosperidad Social - DPS, apoya la siembra de árboles en el Eje Cafetero



El DPS, desarrolla un programa de compensación ambiental, por medio de su componente Ruta de Ingresos y Empresarismo RIE, mediante el cual se apoya la plantación forestal protectora en el eje ambiental del eje cafetero.



Capacity development for social stakeholders

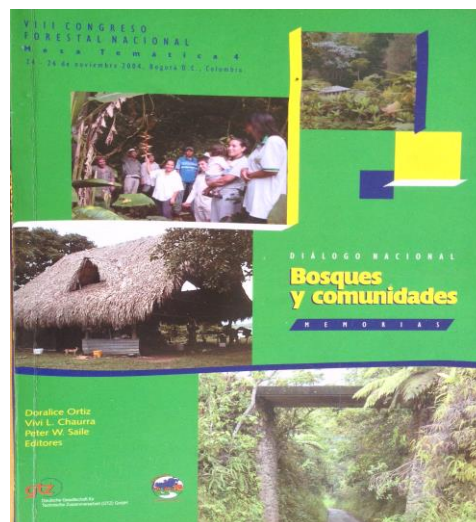
“National Dialogue Forests and Communities” in the context of the VIII. National Forest Congress, Bogota, 2005. A cooperation with German Technical Cooperation GTZ (today GIZ), Aldea Global brought together 135 representatives of community organizations, including indigenous peoples and Afro-Colombian communities from all parts of Colombia:

Asoheca, Caquetá; Priedecu, Norte de Santander; Pacofor, Tolima and Caldas; Familias Guardabosques, Necoclí and Santa Martha; Agronaya, Cauca. Participants discussed during 2,5 days key elements of a -Forest Extension Service for Colombia.

Nfp-Facility of FAO: established the “Mesa Nacional”, bringing together 85 representatives from institutions and organizations from all over Colombia. This group made important contributions to the new Forest Code, and to update the “Plan Nacional de Desarrollo Forestal - PNDF”, with special emphasis on communication strategies, community organization and participation.

National Forum and Training Course on Compensation for Environmental Services, in cooperation with IICA. A total of 144 participants attended the events which had international participation from World Bank, Costa Rica and Guatemala. For details see:

http://www.coraldeaglobal.org/wp-content/uploads/2013/12/MemoriaCursoTaller-Foro-PSE_7-10may2013.pdf



Contd. Capacity development for social stakeholders:

Diploma course on environment, risk assessment and management. 25 participants, 70 % from highly vulnerable communities in the surroundings of Manizales, department of Caldas, attended this training. Key partners: Ecopetrol and Universidad Nacional de Colombia.

Development of Social Enterprises for improving the living conditions of vulnerable populations: better health and nutrition for 6000 people and their children in Caldas department.
Key partners: Ecopetrol and Grameen Foundation Caldas.

Diploma course



Strategic Partners



– Income generation in rural areas

CSR funds from Ecopetrol and other firms were channeled towards small and medium farmers and indigenous communities to create new income sources and to improve existing ones, all respecting environmental sustainability. Some lines of action:

-Agroforestry systems with cocoa (18 ha), with plantain (25 ha), with rubber (8 ha), and with sugar cane (22 ha), resulting in more stable and higher household income and more biodiversity in species rich agro-ecosystems.

Production of panela (unrefined raw sugar): technical improvement of 9 artisanal sugar plants and support of producers in getting certification from Invima.

Handicrafts: capacity development of 23 women and start of operation of a small community enterprise in Supía, department of Caldas.

Better nutrition for children, including meat and eggs in their diet. To achieve this in a sustainable way, small chicken farms were established, in combination with improved production of staples and vegetables.

To make innovations sustainable, training in best agricultural practices through field visits, exchange of experiences enable communities including young adults to maintain innovations.

Productive cocoa cultivation through cloning. Women and young people were training in this technique in Marsella, department of Risaralda.

Establishment of fuel wood plantations to overcome its burdensome collection and to reduce pressure on still existing natural forests. This activity favors especially women.

Building of 60 fuel saving cook stoves with 35 % economy on fuel wood and homes free from the unhealthy smoke.

Prototype of fuel efficient cook stove

Manizales, Colombia. Tel + 57 6 8869002 mobile: + 57 3164828859. Email: dir@coraldeaglobal.org. www.coraldeaglobal.org



Micro businesses in handicraft



"Learning by doing"

Planting of sugar cane Association Nuevo Río
Claro- Villamaría, Caldas

Corporación Aldea Global
Participatory Planning for Sustainable Development

Beneficiaries: 425 rural families in the departments of Caldas, Tolima and Risaralda; Embera Chamí indigenous peoples in the indigenous reserves of Suratena, Altomira and San Lorenzo Risaralda and Caldas departments.

Craftswomen



Fuel wood plantation



Strategic partners:



– **Forest governance**

Systematization of lessons learnt from the projects “ Bosques FLEGT” and “Posicionamiento de la Gobernanza Forestal en Colombia”. See:

http://www.coraldeaglobal.org/wp-content/uploads/2013/10/Legalidad-y-sostenibilidad-de-la-guadua_2012.pdf

- Signature and dynamization of the National Compact for legal timber, in 6 departments and more than 200 forest stakeholders

Development of a proposal for a Forest Extension Service in Colombia, presented at the VIII- National Forest Congress

- Obtained signatures of four Agreements for implementation of a Forest Extension System in the Coffee growing region of Colombia

Design of the national strategy for social participation in forest management, with implementation of pilot projects in the departments of Antioquia, Choco and Risaralda



- Strategic partners:



- Forests, Forest and agroforestry management

- Technical assistance for the establishment of 1,600 ha of forest plantations, with strong focus on participation of small farmers and indigenous communities in the Eje Cafetero
- Sustainable land use systems as a means to respond to increased climate variability and to adapt to climate change, including disaster risk management and respective erosion control measures (14 ha), silvopastoral and agroforestry systems (19 ha); watersheds of Chinchiná and San Francisco rivers, departments of Caldas and Risaralda

Implementation of the forestry component of the GIZ-managed programme “CERCAPAZ”

Establishment of forest and agroforestry nurseries together with women and young adults of rural communities, as a means to increase household income thus reducing migration to urban centers

Agroforestry projects
MIDAS-USAID



Strategic partners:



3. Main achievements

It is not an easy task to summarize in a few words what Aldea Global has achieved, in a decade and a half, in a process of collective construction. Let's highlight in the following a few aspects that we consider valuable lessons:

Positive responses from the communities: throughout the more than 50 projects carried out, rural communities have responded with interest and enthusiasm. They have embraced the innovations; consolidated associations, revolving funds successfully established and trained leaders at different parts of the country count the story of our contribution to sustainable development.

Gender and inter-generational equality: from the field are emerging new leaders, women, who have taken their lives into their own hands, increase household income, learn new skills and techniques and establish successful micro-enterprises. A good example of this trend is the small association of 23 women in Supía who have a handicraft production up and running.

Design of meaningful strategies of social participation: take the case of the so-called Plans of Immediate Action - PAI, a technocratic planning tool. Through active participation of stakeholders, these plans not only gain relevance and meaning, they become an efficient way to reconcile environmental aspects with better living conditions for rural populations

Community managed tree nurseries: they raise awareness about the environment, provide tree plants in the rural areas, generate income, and catalyze the establishment of associative forms of community collaboration.

The convening power of Aldea Global: at national level, our convening power has helped us to bring together 135 stakeholders from all over Colombia to a national round table on "Forests and Communities". This round table was a joint project of Aldea Global and GTZ (today GIZ); we convened 144 people from Colombia and Central America for a national workshop on Payment for Environmental Services, together with World Bank.

Aldea Global is part of civil society organizations: since 2007 Aldea Global is an official member of the Forest Stewardship Council/ FSC chamber Social South, in Bonn, Germany. We are part of Partners of the Americas, Colombian chapter. At regional level, we participate in the System of municipal protected areas of Manizales/ SIMAP

We have been instrumental to establish a department-wide federation of environmental NGO's called "UMBRA" in 2014

Our projection is the future of new generations: we believe that providing training and education opportunities to young people from poor and marginal families will open them ways to an adult live in dignity as useful members of society

Corporación Aldea Global
Participatory Planning for Sustainable Development

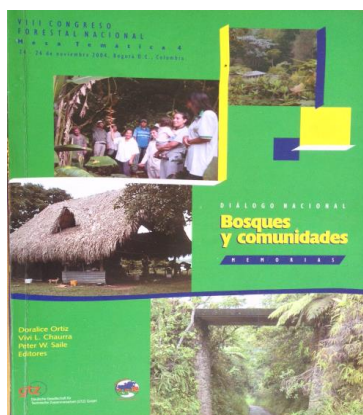
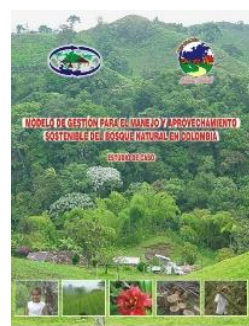
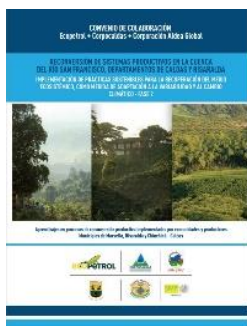
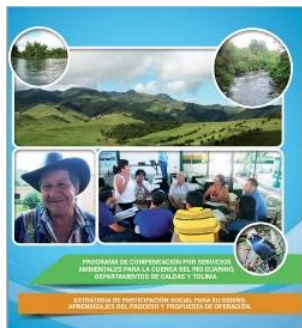


Professor Muhammad Yunus, Nobel Peace Prize (2006) and Doralice Ortiz, Executive Director of Aldea Global

During his visit to Colombia, the Nobel met with Aldea Global in Manizales, November, 2013

We share our lessons learnt: more than 20 documents, books, reviews, training material, videos, etc. document our institutional memory and learning process:

Books:



Corporación Aldea Global
Participatory Planning for Sustainable Development



We thank all those who have supported us in this endeavor to help build an environmental culture in the population, and to improve the quality of life in rural areas as a key contribution to peace in Colombia. Thank you!

General Assembly - Corporación Aldea Global
Doralice Ortiz Ortiz - Directora Ejecutiva

Glossary

– CATIE	Centro agronómico tropical de investigación y enseñanza
– CHEC	Central Hidroeléctrica de Caldas
– CIFOR	Centro Internacional Forestal de Indonesia
– Corpocaldas	Corporación Autónoma Regional de Caldas
– CRQ	Corporación Autónoma Regional del Quindío
– Cortolima	Corporación Autónoma Regional del Tolima
– DPS	Departamento de Prosperidad Social de la Presidencia de la República
– GIZ	Agencia de Cooperación Técnica Alemana
– IICA	Instituto Interamericano de Cooperación para la Agricultura – Colombia
– IDEA	Instituto de Estudios Ambientales
– INVIMA	Instituto Nacional de vigilancia de medicamentos y alimentos